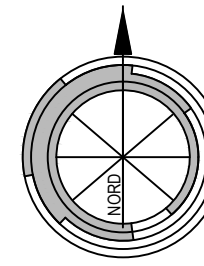
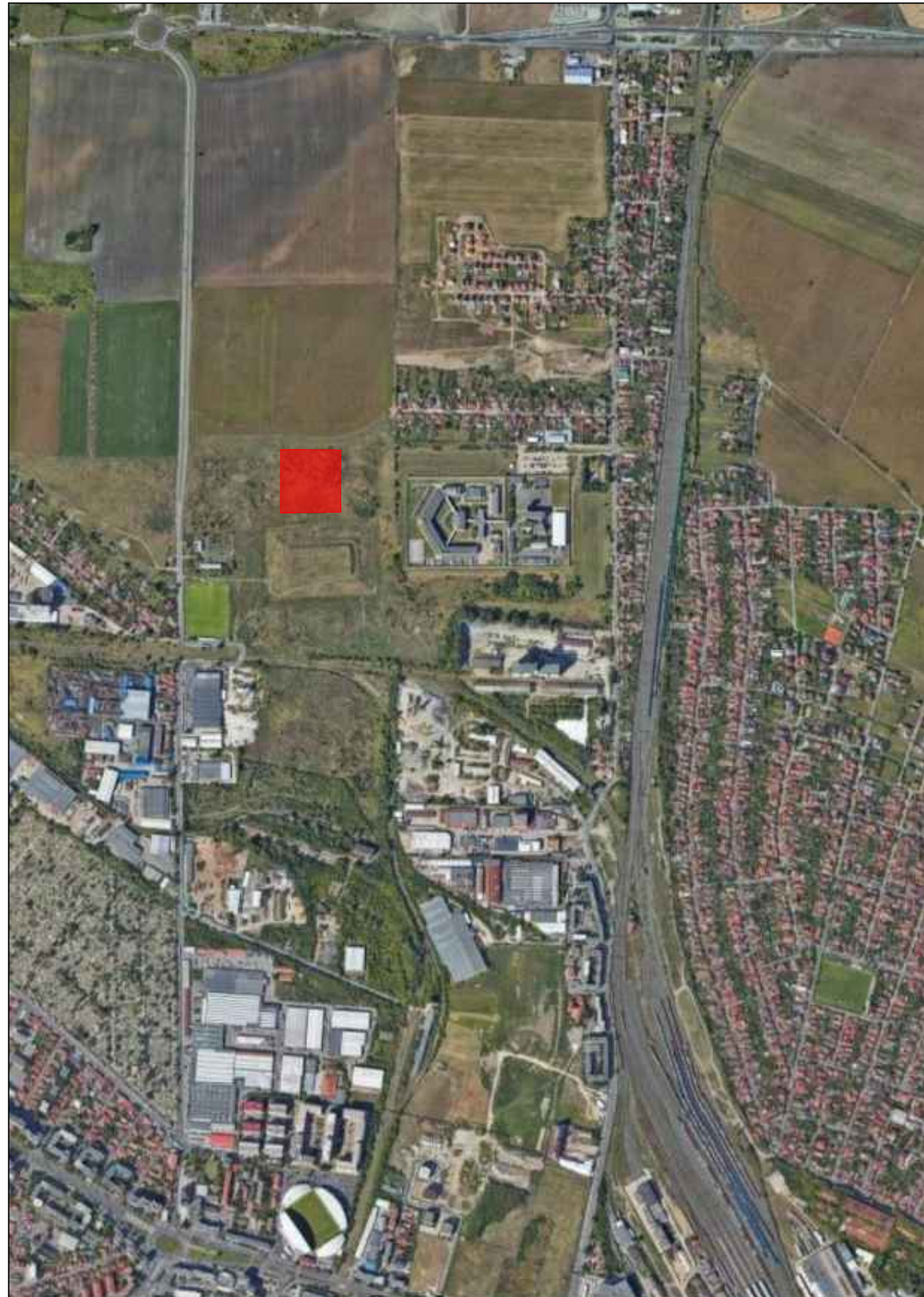


INCADRARE IN ZONA



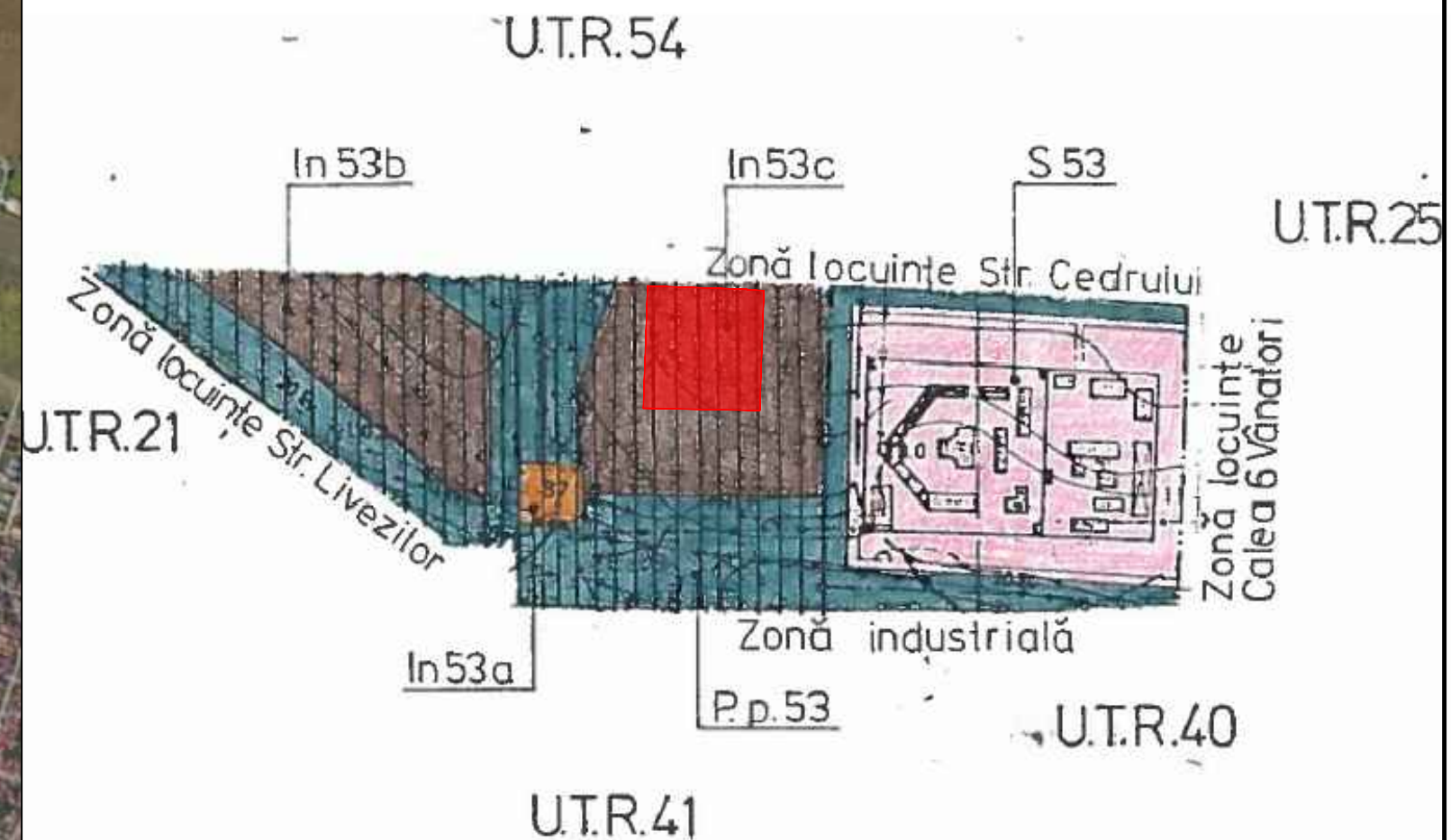
# STUDIU DE OPORTUNITATE

CAMPUS INTEGRAT DUAL - I.N.I.T.I.A.T.I.V.E. - d  
 Implicare in Nevoia de Inovare Tehnologica si Initiative  
 privind Angajabilitatea Tinerilor Inclusi in Viziunea  
 Educationala duala

Intravilan, Mun. Arad, CF. nr. 363472 Arad

0 INCADRARE IN ZONA

INCADRARE IN PUG - UTR 53



LIMITA INCINTA REGLEMENTATA  
 S teren = 20.000 mp, conf. C.F. nr. 363472 ARAD  
 Teren proprietate MUNICIPIUL ARAD

<b>PROIECTANT:</b> <b>TARA PLAN s.r.l.</b> mun. Arad, str. Tudor Vladimirescu, nr. 15A, cod postal 310010, jud. Arad, Nr. Reg. Com. J02/1251/2006, CUI RO 18832512 tel.0749.111.572, tel. 0728.365.027, e-mail: danielauraschi@gmail.com		<b>BENEFICIAR:</b> MUNICIPIUL ARAD	
<b>DENUMIRE PROIECT:</b> PUZ si RLU "CAMPUS INTEGRAT DUAL - I.N.I.T.I.A.T.I.V.E. - d Implicare in Nevoia de Inovare Tehnologica si Initiative privind Angajabilitatea Tinerilor Inclusi in Viziunea Educationala duala"		<b>PR. NR.:</b> /2023	
<b>Sef proiect:</b>	arh. Gheorghe SECULICI	<b>SCARA:</b>	<b>OBIECT:</b>
<b>Proiectat:</b>	arh. Andreea TUȚU		<b>FAZA:</b> C.U.
<b>Desenat:</b>	arh.stag. Oana HOLOMEI	feb. 2023	<b>NR. PLANSA:</b> 00 A
		<b>INCADRARE IN ZONA</b>	